



# FMSI EDELMANN FITTINGS

PROBLEM SOLVING AUTOMOTIVE HARDWARE

FAX : 905-335-0327  
 PHONE: 1-800-651-7445  
 E-MAIL: INFO@FMSIINC.COM  
 HTTP://WWW.FMSIINC.COM

## 0117 - AIR CONDITIONING LINE SPLICE & BLOCK OFF ASSORTMENTS

<p><b>76000</b>          5/16" - 3/8" - 1/2"          UNIVERSAL LINE SPLICE</p>			<p><b>76002</b>          3/8"          UNIVERSAL LINE SPLICE</p>		
<p><b>6050</b>          BLOCK OFF CAPS          USED WITH:</p> <ul style="list-style-type: none"> <li>• 76000 • 76002</li> <li>• 76001 • 76003</li> </ul>	<p><b>5031</b>          O-RING SEAL</p> <p><i>MUST BE USED WITH 6050 BLOCK OFF CAP</i></p>	<p><b>76011</b>          5/8"          UNIVERSAL LINE SPLICE</p>			
<p><b>6051</b>          BLOCK OFF CAPS          USED WITH:</p> <ul style="list-style-type: none"> <li>• 76011</li> </ul>	<p><b>5032</b>          O-RING SEAL</p> <p><i>MUST BE USED WITH 6051 BLOCK OFF CAP</i></p>	<p><b>31879</b>          PERMATEX BLUE REMOVABLE STRENGTH THREADLOCKER</p> <p><i>MUST BE USED ON THREAD FOR BLOCK OFF CAPS</i></p> <ul style="list-style-type: none"> <li>• 6050</li> <li>• 6051</li> </ul>			

### Block Off Cap Installation Instructions For -76000, 76001, 76002, 76003

- Remove red nut from one end of the line splice.
- Install 5031 O-ring seal on end where nut was removed.
- Apply red thread locker on side that will accept 6050 Block off Cap.
- Finger tighten, using 7/8" (22mm) wrench on nut and torque to max of 25 ft-lbs

### Block Off Cap Installation Instructions For -76011

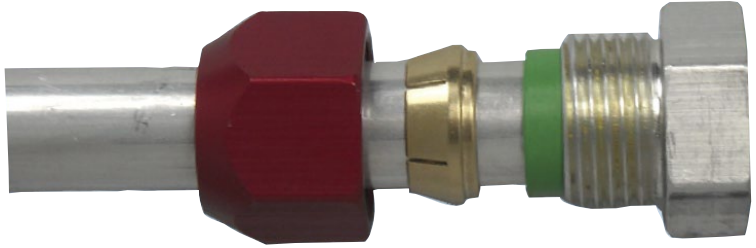
- Remove red nut from one end of the line splice.
- Install 5032 O-ring seal on end where nut was removed.
- Apply red thread locker on side that will accept 6051 Block off Cap.
- Finger tighten, using 1" (25mm) wrench on nut and torque to max of 25 ft-lbs



**FMSI EDELMANN FITTINGS**  
PROBLEM SOLVING AUTOMOTIVE HARDWARE

FAX : 905-335-0327  
PHONE: 1-800-651-7445  
E-MAIL: INFO@FMSIINC.COM  
HTTP://WWW.FMSIINC.COM

## 0117 - A/C MASTER LINE SPLICE & BLOCK OFF ASSORTMENTS



### BLOCK OFF CAP INSTALLATION INSTRUCTIONS FOR 76000, 76001, 76002, 76003

- Remove red nut from one end of the line splice
- Install 5031 O-ring seal
- Apply red thread locker on side that will accept 6050
- Block off cap
- Finger tighten, using 7/8"(22mm) wrench on nut and torque to max of 25 ft-lbs

### BLOCK OFF CAP INSTALLATION INSTRUCTIONS FOR 76011

- Remove red nut from one end of the line splice
- Install 5032 O-ring seal on end where nut was removed
- Apply red thread locker on side that will accept 6051
- Block off cap
- Finger tighten, using 7/8"(22mm) wrench on nut and torque to max of 25 ft-lbs